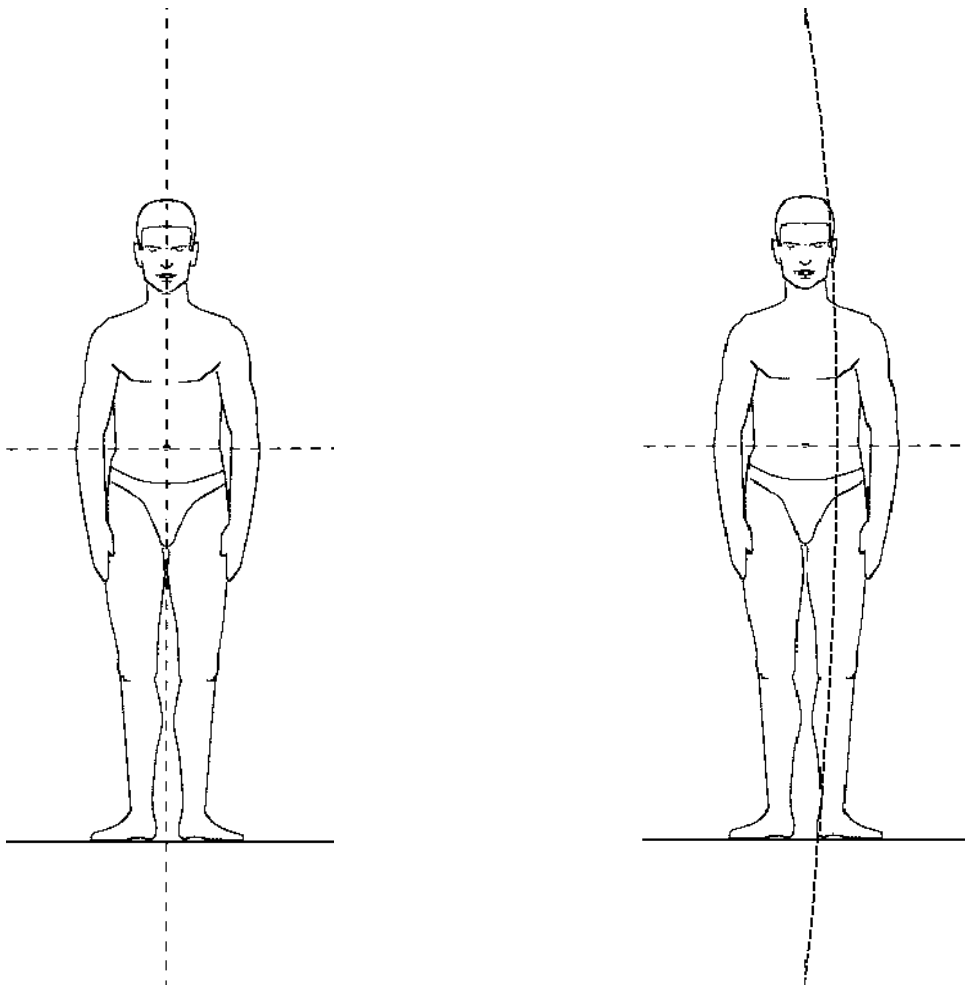


TORSION FIELD AND THE HUMAN BODY

By Thomas Edye, Electrical-Engineer EPFL, Dowser, Geo-Biologist, Healer

ABSTRACT: By studying the behaviour of the etheric body, we discovered that there is a relationship between torsion field and the axis of symmetry of the etheric body. There are a series of reasons that makes us believe that the human etheric body is not only subject to torsion field from the outer world, but it acts also as an emitter of torsion field.

The measurement of the etheric body according to the method proposed by Stephan Cardinaux (1) not only considers the size of the etheric body but also the location of the planes of symmetry, with respect to our physical body. By studying the behaviour of these symmetry-planes, together with Stephan Cardinaux, we found that the left-right vertical plane has to do with the direction of rotation of the torsion field.



Normally, if globally, there is more right-hand than left-hand torsion field, the vertical plane is aligned with the physical symmetry plane that goes through the navel. This plane can be detected on our own etheric body or on another person's etheric body, using our increased perception, scanning the etheric body with our hands, or with some dowsing tool such as rods.

When we put the person we observe into left-hand torsion field, for example within the emission cone of a GSM-Antenna, the vertical plane is shifting to the left by a few inches. This left-shift is always accompanied by a decrease of the size of the etheric body. However, a decrease of the etheric body does not always come with a left shift of the plane.

The size of the etheric body stands for vitality: Anything that increases our vitality: good news, healthy food, being in a sacred place, certain minerals, essential oils, will increase the size of our etheric body and the vertical axis will be aligned. On the other hand, electrical disturbances, bad news, standing on a geopathogenic zone, poison, unhealthy food, but also emotional blockage, will reduce the size of our etheric body, and in some cases, the vertical axis will be shifted to the left.

The effect of torsion field correcting devices

Knowing this, we tried to understand the effect of a torsion field correcting device such as a Spinor (2). These correcting devices are supposed to emit right-hand torsion field, thus counterbalancing the left-hand torsion field emission that comes with HF-EMF (High Frequency Electromagnetic Fields, such as GSM, Wifi, DECT, ...). We verified that when a person is subject to HF-EMF, its size of the etheric body decreases, in severe cases it is reduced to less than 50% of its normal size. Its vertical axis is shifted to the left by a few inches. Now we place a torsion field correcting device on the person's solar plexus. The size of the etheric body has become normal again and the vertical axis is aligned. As the torsion field correcting device has no effect on the electromagnetic waves, the observed reaction etheric body can be interpreted as follows: Left-hand torsion field is not in accordance with life and all the biochemical processes in our cells which require right-hand torsion field to operate correctly. Left-hand torsion field is like a poison, and our etheric body reacts by a decrease of its size. Compensating the left-hand torsion field will not cancel other effects that arise from high level HF-radiation. This should be kept in mind when using your cellular phone with a torsion correcting sticker placed on it.

The vertical axis as an indicator for left-hand torsion field

Presently, we assume that the vertical axis is really a measurement for left-hand torsion field. We also performed many studies using the IGA-1 instrument (3), developed by the Russian scientist Yuri Kravchenko. We made a series of measurements of all kind and observed simultaneously the reaction of the IGA-1 and the reaction of the vertical axis. The results are fully in accordance.

While making these studies, we realized that EM radiation is not the only cause for our vertical axis to shift to the left and for the IGA-1 to indicate left-hand torsion field. There are certain other phenomena that cause a shift to the left. Here is a non-exhaustive list:

- Geopathogenic areas (earth cracks, underground water)
- Water that has been placed in a microwave oven
- Presence of entities (also called lost souls), astral parasites, etheric objects
- Adverse emotional states, fear, anger
- Mentally focussing on a geopathogenic area.
- Other ...

Who is emitting the left-hand torsion field?

When looking at the list above, you see a variety of phenomena which are not physical at all, and they all cause a reaction of our etheric body, as well as a reaction on the display of the IGA-1 instrument. We came to ask ourselves if the IGA-1 is measuring slight changes in the human etheric body rather than torsion field. We cannot answer this question because we have not done any remote measurement, where the IGA-1 is operated far away from the etheric body of the operator. But we have many other reasons that make us believe that a human can act itself as an emitter of right-hand or left-hand torsion field.

Here an example: We made an experience with several persons and have them approach a very negative astral entity. Some of the participants were showing a lot of fear and had their vertical axis strongly shifted to the left, some were not, or only a little scared, and had their axis only slightly shifted to the left. When we placed a scared person nearby the negative astral entity, the other participants were showing a much increased left shift of their vertical axis.

We have all experienced how a strong emotional state of a person can affect a whole group of persons, in a meeting for example. Looking at the vertical axis, we noticed that the axis of an

angry person shifts to the left. When you approach this person, your own axis will shift to the left on its turn.

Geometric form as generators of torsion field?

The theory of a spiralling torsion field explains the formation of spiralling forms of life. The double spiral structure of a snail shell is a very nice example. In order to build up the shell made of carbon oxide, the right-hand torsion field is supposed to play an important role. Experiences with empty snail shells found in nature allowed us to realize that they are generating right hand torsion field. We even succeeded to compensate the torsion field of a mobile phone with a package of spiralled noodles.

We also made experiences with water put in the microwave oven. When placed on the solar plexus, a bottle filled with water that has been exposed for a few seconds to microwave radiation strongly reduces the size of the etheric body, and causes a strong left shift of the vertical axis. Is it the water that emits left-hand torsion field, or if it is the response of our body to something else that happened? We rather think that the form of the water clusters is responsible for the emission of left- or right-hand torsion field. On the market there are ceramics that affect the water clusters. When we put such a ceramic into the microwave contaminated water and we noticed that the water was no more causing a left shift of the vertical axis.

Other experiences with water showed that it is possible to modify the water clusters just by concentrating our mental energy into the water inside a bottle. Could it be, that our emotional and mental state continuously modifies the clusters within the water inside our body, and that these are responsible for the generation of torsion field?